

NEBRASKA EMERGENCY ALERT SYSTEM (EAS) STATE PLAN

Posted March 2001

SCOPE

The purpose of this plan is to create a functional interconnecting EAS web system to disseminate coded emergency information to all broadcast and cable operations in the state of Nebraska. Broadcast and cable operators are mandated to respond to national and presidential emergency messages. Response to state and local emergencies is voluntary but assumed to be performed consistent with providing public service for the community each operator serves. Complete FCC EAS rules may be viewed at <http://www.fcc.gov/cib/eas/47part11.htm>.

This plan is a living document and may be changed or updated at any time by forwarding the appropriate information to the proper state and federal offices. All communities are expected to create their own specific emergency plans plan for dealing with their specific local emergencies.

All stations are required to monitor two sources for EAS messages. Additionally each station is encouraged to monitor their network and additional local sources to obtain additional input for national and local emergencies.

STATE WEB NETWORK

All Nebraska Educational Television (NETV) and Nebraska Public Radio Network (NPRN) stations (including KIOS in Omaha) are designated as state relay stations (SR) with KUON-TV (Lincoln) designated the state primary station (SP). All state primary and relay stations (SP, SR) will monitor NOAA weather radio for input #1 and the closest LP-1 station for input #2. KUON-TV (SP) will also use #3 monitor input for the state EOC communications link. KUON-TV input #4 will monitor NPR Cue (squawk) channel which relays all National EAN messages.

LOCAL PRIMARY STATIONS

The Nebraska EAS plan requires all local stations (LP-1, LP) to monitor the state relay network on input #2 and NOAA weather radio on input #1.

Stations that can not receive NOAA weather radio will monitor their closest LP-1 station. Most stations designated CPCS-1 in the old EBS plan are now designated EAS LP-1 stations. Additional TV and FM stations have also been designated LP-1.

All other Nebraska stations are designated local primary stations (LP).

(SR) State Relay Stations EAS Input #2 For All LP-1 and LP Stations

<u>Location</u>	<u>TV</u>	<u>Chn</u>	<u>FM</u>	<u>Freq MHz</u>
Alliance	KTNE-TV	13	KTNE-FM	91.1
Bassett	KMNE-TV	7	KMNE-FM	90.3
Chadron			KLNE-FM	91.9
Hastings	KHNE-TV	29	KHNE-FM	89.1
Lexington	KLNE-TV	3	KLNE-FM	88.7
Lincoln	KUON-TV	12	KUCV-FM	90.9
Merriman	KRNE-TV	12	KRNE-FM	91.5
Norfolk	KXNE-TV	19	KXNE-FM	89.3
North Platte	KPNE-TV	9	KPNE-FM	91.7
Omaha	KYNE-TV	26	KIOS-FM	91.5

NOAA Weather Radio Stations EAS Input #1 For All Stations

<u>Location</u>	<u>Frequency</u>	<u>Weather-office Source</u>
Bassett	162.475 MHz	North Platte
Grand Island	162.400 MHz	Hastings
Holdrege	162.475 MHz	Hastings
Lincoln	162.475 MHz	Valley
Merriman	162.400 MHz	North Platte
Norfolk	162.550 MHz	Valley
North Platte	162.550 MHz	North Platte
Omaha	162.400 MHz	Valley
Scottsbluff	162.550 MHz	Cheyenne

NEBRASKA MAIN LOCAL PRIMARY (LP-1) STATIONS

CITY	COUNTY	FIPS	CALL	FREQ
Alliance	Box Butte	31013	KCOW	1400
Alliance	Box Butte	31013	KAAQ (FM)	105.9
Ainsworth	Brown	31017	KBRB	1400
Ainsworth	Brown	31017	KBRB-FM	92.7
Broken Bow	Custer	31041	KCNI	1280
Broken Bow	Custer	31041	KNJP-FM	92.1
Chadron	Dawes	31045	KCSR	610
Chadron	Dawes	31045	KQSK-FM	97.5
Dakota City	Dakota	31043	KTFJ	1250
Grand Island	Hall	31079	KRGI	1430
Grand Island	Hall	31079	KRGI-FM	96.5
Grand Island	Hall	31079	KGIN-TV	Ch 11
Hastings	Adams	31001	KHAS	1230
Hastings	Adams	31001	KROR-FM	101.5
Hastings	Adams	31001	KHAS-TV	Ch 5
Kearney	Buffalo	31019	KHGI-TV	Ch 13
Kearney	Buffalo	31019	KGFW	1340
Kearney	Buffalo	31019	KQKY-FM	105.9
Lexington	Dawson	31047	KRVN	880
Lexington	Dawson	31047	KRVN-FM	93.1
Lincoln	Lancaster	31109	KFOR	1240
Lincoln	Lancaster	31109	KFRX-FM	102.7
Lincoln	Lancaster	31109	KOLN-TV	Ch 10
McCook	Red Willow	31145	KBRL	1300
McCook	Red Willow	31145	KIOD-FM	105.3
McCook	Red Willow	31145	KSNK-TV	Ch 8

Nebraska LP-1 Stations (continued)

CITY	COUNTY	FIPS	CALL	FREQ
Norfolk	Madison	31119	WJAG	780
Norfolk	Madison	31119	KEXL-FM	106.7
North Platte	Lincoln	31111	KODY	1240
North Platte	Lincoln	31111	KJLT-FM	94.9
North Platte	Lincoln	31111	KNOP-TV	Ch 2
O'Neill	Holt	31089	KBRX	1350
O'Neill	Holt	31089	KBRX-FM	102.9
Omaha	Douglas	31055	KFAB	1110
Omaha	Douglas	31055	KEFM	96.1
Omaha	Douglas	31055	KETV	Ch 7
Scottsbluff	Scotts Bluff	31157	KNEB	960
Scottsbluff	Scotts Bluff	31157	KNEB-FM	94.1
Scottsbluff	Scotts Bluff	31157	KDUH-TV	Ch 4
Sidney	Cheyenne	31033	KSID	1340
Sidney	Cheyenne	31033	KSID-FM	98.7
Valentine	Cherry	31031	KVSH	940
Valentine	Cherry	31031	KINI-FM	96.1
Westpoint	Cuming	31039	KTIC	840
Westpoint	Cuming	31039	KWPN-FM	107.9

LOCAL AREAS

All stations will program their equipment to designate their county of license and each adjacent county in the stations coverage as their local primary area. Adjacent counties in adjoining states are also to be included as part of the Nebraska local area. Stations may at their option program other counties in their primary coverage area as part of their local area.

OPERATIONAL AREAS

The state of Nebraska has been subdivided into 5 EAS Operational Areas. Subdivision is required to limit statewide activation for regional emergencies.

There is a list of EAS Counties by Regional Area on Page 8 of this plan.

WEEKLY EAS TESTS

All stations are required to perform and log a weekly EAS test at random times to confirm equipment operation. Origination or relay and logging of any EAS message during a week may be considered a valid weekly test.

MONTHLY TESTS OF THE EAS HEADER CODES, ATTENTION SIGNAL, TEST SCRIPT AND EOM CODE.

All EAS transmissions require use of FCC approved EAS encoders and decoders. The old EBS two-tone attention signal has been eliminated for inter-station signaling but is retained as an attention signal for the general public.

Effective January 1, 1997, all AM, FM and TV stations; and, effective July 1, 1997, all subject cable systems must confirm reception and relay of a Required Monthly Test (RMT). Tests in odd number months will occur between 9-11 a.m. Central Time. Tests in even number months will occur between 9-11 p.m. Central Time. A Monthly test must be transmitted within 15 minutes of receipt by all broadcast stations and cable systems. An actual received and relayed State or local EAS emergency activation may be used in place of a required monthly test (RMT). Non operating stations are required to relay their RMT immediately upon resumption of operation.

REQUIRED MONTHLY TEST PROCEEDURE

Stations and cable systems using automatic interrupt must perform the following steps automatically.

1. Discontinue normal programming

2. Transmit an opening announcement before test time

Example of an opening announcement:

=====

"The following is a test of the Emergency Alert System"

=====

Note: TV stations shall transmit all announcements visually and aurally in the manner required by 11.51 and 73.1250(h). Cable system transmission's of EAS announcements may be made in the language as the primary language of the station.

3. Transmit the monthly test EAS header codes, Attention Signal, and test script
The EAS header code for a required monthly test is ~RMT~ for the event and the appropriate location codes for the State and EAS Local Area. Example test messages are available from the FCC.

Note: If the monthly test is an EAS Local Area test, Local Primary sources will originate the test message with only the location codes for the counties in their EAS Local Area as defined by the local areas on page 5. If the monthly test is a State test, State Primary sources will originate the test message with only the location code for their State.

Example of a test script:

=====

This is a monthly coordinated test of the broadcast stations and cable systems of your area. Equipment that can quickly warn you during emergencies is being tested. If this had been an actual emergency such as tornado or flood, official messages would have followed the alert tone. The Nebraska EAS System serves the State of Nebraska area. This concludes this test of the Emergency Alert System.

=====

Required Monthly Test Procedures (continued)

Note: TV stations shall transmit all announcements visually and aurally in the manner required by 11.51 and 73.1250(h). Subject cable systems shall transmit all EAS announcements in the manner required by 11.51. Announcements may be made in the same language as the primary language of the station.

4. Transmit the EAS End Of Message (EOM) Code
5. Resume regular programming
6. Record time test received or transmitted in records/logs
7. Failure to receive the Required Monthly Test.

If you do not receive the above test or an activation from the sources you are assigned to monitor each month, you must determine why and make notations in your records or logs and take corrective action. Your EAS monitoring assignments are provided in this State EAS Plan.

STATE LEVEL ACTIVATION AUTHORIZATION

The following individuals or their representative are authorized to initiate a State Level Activation of the Nebraska EAS System.

1. Governor
Lt. Governor (1st Alternate)
Speaker of the Legislature (2nd Alternate)
2. Nebraska Emergency Management Director
Assistant Nebraska Emergency Management Director (1st Alternate)
Nebraska Emergency Management Operations officer (2nd Alternate)
3. Meteorologist-In-Charge of the State Forecast Center, Omaha

EAS Counties By Regional Area

AREA 1 South East (28 counties)

Nance	Saunders	Otoe	Jefferson
Platte	Douglas	Clay	Gage
Colfax	Sarpy	Fillmore	Pawnee
Dodge	Hamilton	Saline	Richardson
Washington	York	Johnson	
Merrick	Seward	Nemaha	
Polk	Lancaster	Nucholls	
Butler	Cass	Thayer	

AREA 2 South West (23 counties)

McPherson	Howard	Frontier	Red Willow
Logan	Dawson	Gosper	Furnas
Custer	Lincoln	Phelps	Harlan
Valley	Buffalo	Kearney	Franklin
Greeley	Hall	Adams	Webster
Sherman	Hayes	Hitchcock	

AREA 3 North East (13 counties)

Knox	Antelope	Madison	Boone
Cedar	Pierce	Stanton	
Dixon	Wayne	Cuming	
Dakota	Thurston	Burt	

AREA 4 North West (10 1/3 counties)

Eastern Cherry(1/3)		Brown	Thomas	Garfield
Keya Paha	Rock	Blaine	Wheeler	
Boyd	Holt	Loup		

AREA 5 Far West (18 2/3 counties) (Mountain Time)

Western Cherry(2/3)		Scottsbluff	Arthur	Keith
Sioux	Morrill	Banner	Perkins	
Dawes	Garden	Kimball	Chase	
Sheridan	Grant	Cheyenne	Dundy	
Box Butte	Hooker	Deuel		

NEBRASKA EAS CITIES AND COUNTIES

CITY	COUNTY	AREA	EAS CLASS	CALL SIGN	FCC CLASS	FREQ	FACILITIES
Hastings	Adams	2		KICS	AM	1550	500w D
Hastings	Adams	2	LP-I	KHAS	AM	1230	1kw U
Hastings	Adams	2	LP-I	KROR	FM	101.5	100kw@306m
Hastings	Adams	2		KCNT*	FM	88.1	2.3kw@55m
Hastings	Adams	2	SR	KHNE-FM*	FM	89.1	64kw@329m
Hastings	Adams	2	LP-I	KHAS-TV	TV	Ch 05	100kw@223m
Hastings	Adams	2	SR	KHNE-TV*	TV	Ch 29	1550kw@372m
	<i>Adams</i>	2		<i>Coordinated by SBE Chapter 87</i>			
Orchard	Antelope	3		KGRD*	FM	105.3	100kw@153m
	<i>Antelope</i>			<i>Coordinated by SBE Chapter 74</i>			
Albion	Boone	3		KLKE	TV	Ch 24	2570kw@378m
	<i>Boone</i>			<i>Coordinated by SBE Chapter 74</i>			
Alliance	Box Butte	5	LP- I	KCOW	AM	1400	1kw U
Alliance	Box Butte	5	LP- I	KAAQ	FM	105.9	100kw@215m
Alliance	Box Butte	5		KPNY	FM	102.1	100kw@159m
Alliance	Box Butte	5	SR	KTNE-FM*	FM	91.1	92kw@404m
Alliance	Box Butte	5	SR	KTNE-TV*	TV	Ch 13	316kw@49m
	<i>Box Butte</i>	5		<i>Coordinated by SBE Chapter 87</i>			
	<i>Boyd</i>	4		<i>Coordinated by SBE Chapter 87</i>			
Ainsworth	Brown	4	LP- I	KBRB	AM	1400	1kw U
Ainsworth	Brown	4	LP- I	KBRB-FM	FM	92.7	4.5kw@101m
Bassett	Brown	4	SR	KMNE-FM*	FM	90.3	92kw@394m
Bassett	Brown	4	SR	KMNE-TV*	TV	Ch 07	316kw@453m
	<i>Brown</i>	4		<i>Coordinated by SBE Chapter 87</i>			
Kearney	Buffalo	2		KKPR	AM	1460	5kwD,56wN
Kearney	Buffalo	2	LP- I	KGFW	AM	1340	1kw U
Kearney	Buffalo	2		KLPR*	FM	91.3	1kw@37m
Kearney	Buffalo	2		KKPR-FM	FM	98.9	100kw@191m
Kearney	Buffalo	2	LP- I	KQKY	FM	105.9	98kw@308m
Kearney	Buffalo	2		KRNY	FM	102.3	25kw@100m
Kearney	Buffalo	2	LP- I	KHGI-TV	TV	Ch13	316kw@592m
	<i>Buffalo</i>	2		<i>Coordinated by SBE Chapter 87</i>			
Plattsmouth	Cass	1		KOTD	AM	1000	1kwD DA
Plattsmouth	Cass	1		KCTY	FM	106.9	25kw@100m
	<i>Cass</i>	1		<i>Coordinated by SBE Chapter 74</i>			
	<i>Chase</i>	5		<i>Coordinated by SBE Chapter 87</i>			

Crookston	Cherry	4	LP- I	KINI*	FM	96.1	57kw@152m
Merriman	Cherry	5	SR	KRNE-FM*	FM	91.5	92kw@294m
Merriman	Cherry	5	SR	KRNE-TV*	TV	Ch 12	316kw@328m
Valentine	Cherry	4	LP- I	KVSH	AM	940	5kwD,19wN
	Cherry	4		<i>Coordinated by SBE Chapter 87</i>			
Sidney	Cheyenne	5	LP- I	KSID	AM	1340	1kwU
Sidney	Cheyenne	5	LP- I	KSID-FM	FM	98.7	62kw@113m
	Cheyenne	5		<i>Coordinated by SBE Chapter 87</i>			
West Point	Cuming	3	LP- I	KTIC	AM	840	5kw D
West Point	Curning	3	LP- I	KWPN-FM	FM	107.9	50kw@97m
	Cuming	3		<i>Coordinated by SBE Chapter 74</i>			
Broken Bow	Custer	2	LP- I	KCNI	AM	1280	1kw D
Broken Bow	Custer	2		KBBN-FM	FM	98.3	3.4kw@100m
	Custer	2		<i>Coordinated by SBE Chapter 87</i>			
Dakota City	Dakota	3	LP- I	KTFJ	AM	1250	500wD,700wN
	Dakota	3		<i>Coordinated by SBE Chapter 74</i>			
Chadron	Dawes	5	LP- I	KCSR	AM	610	1kwD,118w N
Chadron	Dawes	5	LP- I	KQSK	FM	97.5	100kw@256m
Chadron	Dawes	5	SR	KCNE-FM*	FM	91.9	8.4kw@103m
	Dawes	5		<i>Coordinated by SBE Chapter 87</i>			
Cozad	Dawson	2		KAMI	AM	1580	1kw D, 17w N
Cozad	Dawson	2		KAMI-FM	FM	104.5	100kw@110m
Lexington	Dawson	2	LP- I	KRVN	AM	880	50kwU,DA-N
Lexington	Dawson	2	LP- I	KRVN-FM	FM	93.1	100kw@109m
Lexington	Dawson	2	SR	KLNE-FM*	FM	88.7	92kw@286m
Lexington	Dawson	2	SR	KLNE-TV*	TV	Ch 03	100kw@323m
	Dawson	2		<i>Coordinated by SBE Chapter 87</i>			
Fremont	Dodge	1		KHUB	AM	1340	500wD,250wN
Fremont	Dodge	1		KFMT	FM	105.5	1.2kw@137m
	Dodge	1		<i>Coordinated by SBE Chapter 74</i>			
Bennington	Douglas	1		KRQC	FM	93.3	9.6kw@130m
Omaha	Douglas	1		KOSR	AM	1490	1kw U
Omaha	Douglas	1	LP- I	KFAB	AM	1110	50kwU,DA-N
Omaha	Douglas	1		KKAR	AM	1290	5kwU,DA-N
Omaha	Douglas	1		KCRO	AM	660	1kw D
Omaha	Douglas	1		WOW	AM	590	5kw U
Omaha	Douglas	1		KBBX	AM	1420	1kwD,330wN
Omaha	Douglas	1		KEZO-FM	FM	92.3	97kw@365m
Omaha	Douglas	1	SR	KIOS-FM*	FM	91.5	55kw@169m

Omaha	Douglas	1		KGOR	FM	99.9	115kw@375m
Omaha	Douglas	1		KKCD	FM	105.9	50kw@146m
Omaha	Douglas	1		KGBI-FM*	FM	100.7	100kw@354m
Omaha	Douglas	1		KVNO*	FM	90.7	3kw@195m
Omaha	Douglas	1	LP- I	KEFM	FM	96.1	100kw@431m
Omaha	Douglas	1		KMXM	FM	94.1	100kw@361m
Omaha	Douglas	1		KSRZ	FM	104.5	100kw@331m
Omaha	Douglas	1	LP- I	KETV	TV	Ch 07	316kw@415m
Omaha	Douglas	1		KMTV	TV	Ch 03	100kw@418m
Omaha	Douglas	1		WOWT	TV	Ch 06	100kw@481m
Omaha	Douglas	1	SR	KYNE-TV*	TV	Ch 26	525kw@130m
Omaha	Douglas	1		KPTM	TV	Ch 42	5000kw@577m
Omaha	Douglas	1		KXVO	TV	Ch15	5000kw@577m
	<i>Douglas</i>	<i>1</i>		<i>Coordinated by SBE Chapter 74</i>			
	<i>Deuel</i>	<i>5</i>		<i>Coordinated by SBE Chapter 87</i>			
	<i>Dundy</i>	<i>5</i>		<i>Coordinated by SBE Chapter 87</i>			
	<i>Franklin</i>	<i>2</i>		<i>Coordinated by SBE Chapter 87</i>			
	<i>Frontier</i>	<i>2</i>		<i>Coordinated by SBE Chapter 87</i>			
	<i>Furnas</i>	<i>2</i>		<i>Coordinated by SBE Chapter 87</i>			
Beatrice	Gage	1		KWBE	AM	1450	530w U
	<i>Gage</i>	<i>1</i>		<i>Coordinated by SBE Chapter 74</i>			
	<i>Garfield</i>	<i>4</i>		<i>Coordinated by SBE Chapter 87</i>			
	<i>Gosper</i>	<i>2</i>		<i>Coordinated by SBE Chapter 87</i>			
	<i>Grant</i>	<i>5</i>		<i>Coordinated by SBE Chapter 87</i>			
	<i>Greeley</i>	<i>2</i>		<i>Coordinated by SBE Chapter 87</i>			
Grand Island	Hall	2	LP- I	KRGI	AM	1430	5kwD,1kwNDA
Grand Island	Hall	2		KMMJ	AM	750	10kwU DA-1
Grand Island	Hall	2		KROA	FM	95.7	100kw@140m
Grand Island	Hall	2	LP- I	KRGI-FM	FM	96.5	100kw@129m
Grand Island	Hall	2		KSYZ-FM	FM	107.7	100kw@273m
Grand Island	Hall	2		KTVG	TV	Ch 17	5000kw@590m
Grand Island	Hall	2	LP- I	KGIN	TV	Ch 11	316kw@308m
	<i>Hall</i>	<i>2</i>		<i>Coordinated by SBE Chapter 87</i>			
Aurora	Hamilton	1		KLRB	FM	97.3	50kw@106m
	<i>Hamilton</i>	<i>1</i>		<i>Coordinated by SBE Chapter 74</i>			
	<i>Harlan</i>	<i>2</i>		<i>Coordinated by SBE Chapter 87</i>			

Hayes Center	Hayes	2		KWNB-TV	TV	Ch 06	100kw@216m
	<i>Hayes</i>	2		<i>Coordinated by SBE Chapter 87</i>			
	<i>Hitchcock</i>	2		<i>Coordinated by SBE Chapter 87</i>			
O'Neill O'Neill	Holt	4	LP- I	KBRX	AM	1350	1kw D, 34wN
	Holt	4	LP- I	KBRX-FM	FM	102.9	100kw@131m
	<i>Holt</i>	4		<i>Coordinated by SBE Chapter 87</i>			
	<i>Hooker</i>	5		<i>Coordinated by SBE Chapter 87</i>			
	<i>Howard</i>	2		<i>Coordinated by SBE Chapter 87</i>			
Fairbury Fairbury	Jefferson	1		KGMT	AM	1310	500wD,95wN
	Jefferson	1		KUTT	FM	99.5	100kw@211m
	<i>Jefferson</i>	1		<i>Coordinated by SBE Chapter 74</i>			
	<i>Kearney</i>	2		<i>Coordinated by SBE Chapter 87</i>			
Ogallala Ogallala Ogallala	Keith	5		KOGA	AM	930	5kwD,500wN
	Keith	5		KOGA-FM	FM	99.7	100kw@245m
	Keith	5		KMCX	FM	106.5	100kw@96m
	<i>Keith</i>	5		<i>Coordinated by SBE Chapter 87</i>			
	<i>Keya Paha</i>	4		<i>Coordinated by SBE Chapter 87</i>			
Kimball	Kimball	5		KIMB	AM	1260	1kwD,112wN
	<i>Kimball</i>	5		<i>Coordinated by SBE Chapter 87</i>			
Lincoln	Lancaster	1	LP- I	KFOR	AM	1240	1kw U
Lincoln	Lancaster	1		KMEM	AM	1480	1kwD,275wN
Lincoln	Lancaster	1		KLIN	AM	1400	670w U
Lincoln	Lancaster	1		KIBZ	FM	106.3	100kw@214m
Lincoln	Lancaster	1		KRKR	FM	95.1	50kw@87m
Lincoln	Lancaster	1		KTGL	FM	92.9	100kw@247m
Lincoln	Lancaster	1	LP- I	KFRX	FM	102.7	100kw@131m
Lincoln	Lancaster	1		KLCV*	FM	88.5	4.7kw@94m
Lincoln	Lancaster	1		KGDE	FM	101.9	100kw@345m
Lincoln	Lancaster	1		KRNU*	FM	90.3	100w@38m
Lincoln	Lancaster	1	SR	KUCV*	FM	90.9	15kw@219m
Lincoln	Lancaster	1		KZUM	FM	89.3	1.5kw@31m
Lincoln	Lancaster	1		KBBK	FM	107.3	100kw@168m
Lincoln	Lancaster	1		KKUL	FM	105.3	3kw@100m
Lincoln	Lancaster	1		KLKN	TV	Ch 08	316kw@610m
Lincoln	Lancaster	1	LP-1	KOLN-TV	TV	Ch 10	316kw@454m
Lincoln	Lancaster	1	SP	KUON-TV*	TV	Ch 12	316kw@253m
	<i>Lancaster</i>	1		<i>Coordinated by SBE Chapter 74</i>			

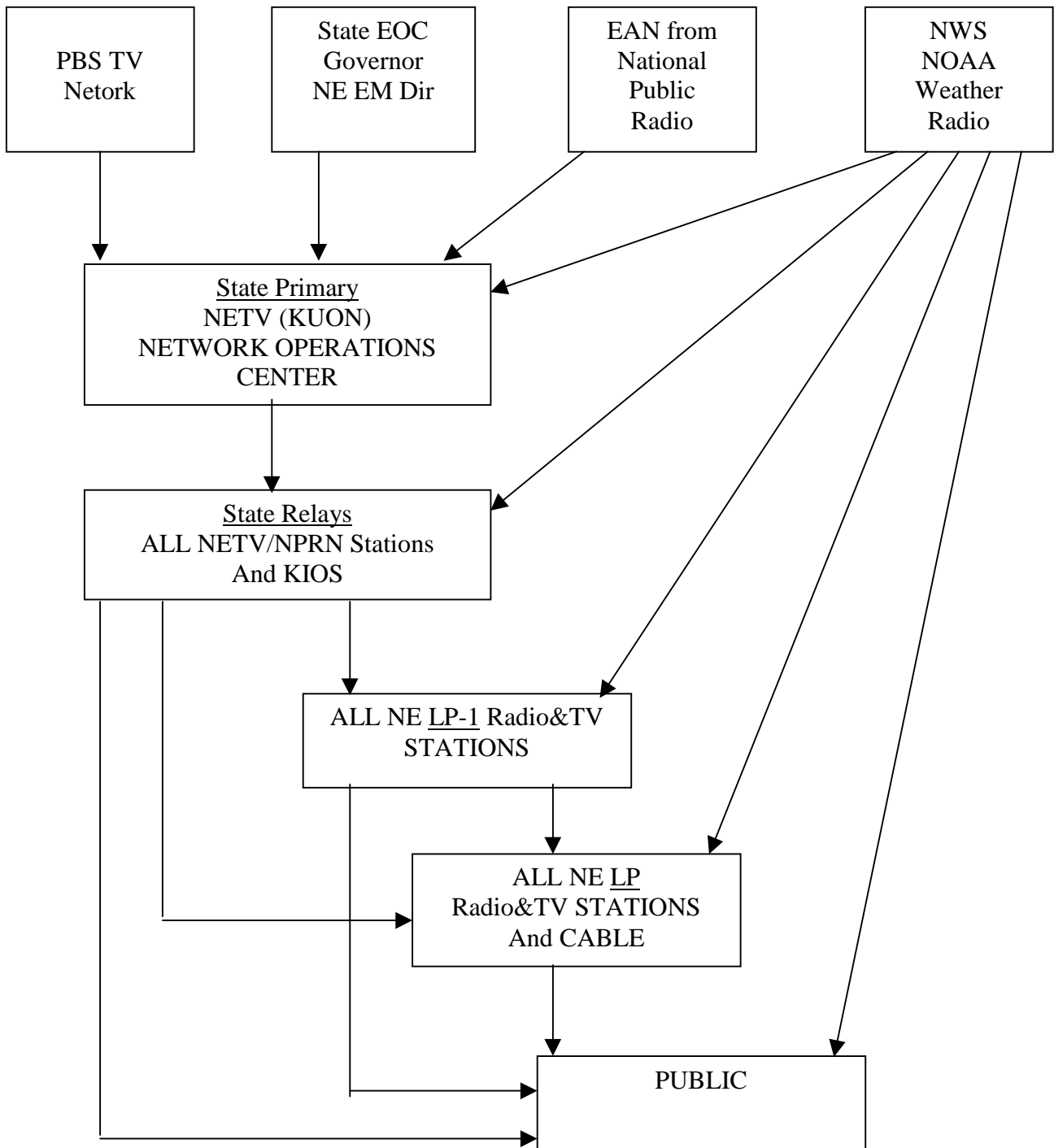
North Platte	Lincoln	2		KOOQ	AM	1410	5kwD,500wNDA
North Platte	Lincoln	2		KJLT*	AM	970	5kwD,55wN
North Platte	Lincoln	2	LP- I	KODY	AM	1240	lkw U
North Platte	Lincoln	2		KELN	FM	97.1	100kw@140m
North Platte	Lincoln	2	LP- I	KJLT-FM	FM	94.9	100kw@230m
North Platte	Lincoln	2		KXNP	FM	103.5	100kw@146m
North Platte	Lincoln	2	SR	KPNE-FM*	FM	91.7	81kw@257m
North Platte	Lincoln	2	LP- I	KNOP-TV	TV	Ch 02	100kw@192m
North Platte	Lincoln	2	SR	KPNE-TV*	TV	Ch 09	316kw@311m
	<i>Lincoln</i>	2		<i>Coordinated by SBE Chapter 87</i>			
	<i>Logan</i>	2		<i>Coordinated by SBE Chapter 87</i>			
	<i>Loup</i>	4		<i>Coordinated by SBE Chapter 87</i>			
Norfolk	Madison	3	LP- I	WJAG	AM	780	lkw U
Norfolk	Madison	3		KNEN	FM	94.7	100kw@162m
Norfolk	Madison	3		KPNO*	FM	90.9	50kw @ 107m
Norfolk	Madison	3	SR	KXNE-FM*	FM	89.3	45kw @ 300m
Norfolk	Madison	3	LP- I	KEXL	FM	106.7	100kw@313m
Norfolk	Madison	3	SR	KXNE-TV*	TV		Ch 19
	<i>Madison</i>	3		<i>Coordinated by SBE Chapter 74</i>			
	<i>McPherson</i>	2		<i>Coordinated by SBE Chapter 87</i>			
Central City	Merrick	1	KZEN	FM	100.3		100kw@562m
	<i>Merrick</i>	1		<i>Coordinated by SBE Chapter 74</i>			
	<i>Morrill</i>	5		<i>Coordinated by SBE Chapter 87</i>			
Auburn	Nemaha	1	KNCY	FM	105.5		14kw@133m
	<i>Nemaha</i>	1		<i>Coordinated by SBE Chapter 74</i>			
Superior	Nuckolls	1	KRFS	AM	1600		500wD,44wN
Superior	Nuckolls	1	KRFS-	FM		6kw @	
			FM			67m	
Superior	Nuckolls	1	KSNB-	TV	Ch 04		100kw@344m
	<i>Nuckolls</i>	1	TV	<i>Coordinated by SBE Chapter 74</i>			
Nebraska City	Otoe	1	KNCY	AM	1600		500wD,31wN
Nebraska City	Otoe	1	KQCH-	FM	97.7		99kw@299m
	<i>Otoe</i>	1	FM	<i>Coordinated by SBE Chapter 74</i>			
	<i>Otoe</i>	1					

	<i>Perkins</i>	5		<i>Coordinated by SBE Chapter 87</i>			
Holdrege	Phelps	2		KUVR	AM	1380	500wD,62wN
Holdrege	Phelps	2		KMTY	FM	97.7	55kw@80m
	<i>Phelps</i>	2		<i>Coordinated by SBE Chapter 87</i>			
Columbus	Platte	1		KTTT	AM	1510	500w D
Columbus	Platte	1		KJSK	AM	900	1kwD,65wN
Columbus	Platte	1		KKOT	FM	93.5	100kw@299m
Columbus	Platte	1		KLIR	FM	101.1	100kw@232m
Columbus	Platte	1		KTLX*	FM	91.9	100w@16m
	<i>Platte</i>	1		<i>Coordinated by SBE Chapter 74</i>			
McCook	Red Willow	2	LP- I	KBRL	AM	1300	5kwDA,136N
McCook	Red Willow	2		KNGN*	AM	1360	1kw D
McCook	Red Willow	2		KICX	FM	96.1	3.1kw@115m
McCook	Red Willow	2	LP- I	KIOD	FM	105.3	100kw@180m
McCook	Red Willow	2	LP- I	KSNK	TV	Ch 08	295kw@216m
	<i>Red Willow</i>	2		<i>Coordinated by SBE Chapter 87</i>			
Falls City	Richardson	1		KTNC	AM	1230	500wD,1kwN
	<i>Richardson</i>	1		<i>Coordinated by SBE Chapter 74</i>			
	<i>Rock</i>	4		<i>Coordinated by SBE Chapter 87</i>			
Crete	Saline	1	KSLI	FM	104.1		31kw@187m
Crete	Saline	1	KDNE	FM	91.9	200w@20m	
	<i>Saline</i>	1		<i>Coordinated by SBE Chapter 74</i>			
Bellevue	Sarpy	1	KOIL	AM	1180	25kwD,1kwNDA-2	
	<i>Sarpy</i>	1		<i>Coordinated by SBE Chapter 74</i>			
Scottsbluff	Scotts Bluff	5	LP- I	KNEB	AM	960	1kwD,500wNDA
Scottsbluff	Scotts Bluff	5		KOLT	AM	1320	5kwD,1kwNDA
Scottsbluff	Scotts Bluff	5		KMOR	FM	92.9	100kw@311m
Scottsbluff	Scotts Bluff	5	LP- I	KNEB-FM	FM	94.1	100kw@207m
Scottsbluff	Scotts Bluff	5	LP- I	KDUH-TV	TV	Ch 04	100kw@610m
Scottsbluff	Scotts Bluff	5		KSTF	TV	Ch 10	240kw@256m
Terrytown	Scotts Bluff	5		KOAQ	AM	690	1kwD,65wN
Terrytown	Scotts Bluff	5		KCMI	FM	96.9	100kw@211m
	<i>Scotts Bluff</i>	5		<i>Coordinated by SBE Chapter 87</i>			
Milford	Seward	1		KFGE	FM	98.1	100kw@299m
Seward	Seward	1		KZKX	FM	96.9	100kw@177m
	<i>Seward</i>	1		<i>Coordinated by SBE Chapter 74</i>			
Gordon	Sheridan	5		KSDZ	FM	95.5	60kw@95m

	<i>Sheridan</i>	5	<i>Coordinated by SBE Chapter 87</i>			
	<i>Sherman</i>	2	<i>Coordinated by SBE Chapter 87</i>			
	<i>Sioux</i>	5	<i>Coordinated by SBE Chapter 87</i>			
Wilber	Thayer	1	KFLV*FM	FM	89.9	8.8kw@107m
	<i>Thayer</i>	1	<i>Coordinated by SBE Chapter 74</i>			
Winnebago	Thurston	3	KSUX	FM	105.7	50kw@141m
	<i>Thurston</i>	3	<i>Coordinated by SBE Chapter 74</i>			
Ord	Valley	2	KNLV	AM	1060	1kw D
Ord	Valley	2	KNLV-FM	FM	103.9	4.7kw@115m
	<i>Valley</i>	2	<i>Coordinated by SBE Chapter 87</i>			
Blair	Washington	1	KISP	FM	101.5	25kw@92m
Blair	Washington	1	KDCV-FM*	FM	91.1	6w@27m
	<i>Washington</i>	1	<i>Coordinated by SBE Chapter 74</i>			
Wayne	Wayne	3	KTCH	AM	1590	2.5kwD,47wN
Wayne	Wayne	3	KTCH-FM	FM	104.9	25kw@92m
Wayne	Wayne	3	KWSC*	FM	91.9	320w @29m
	<i>Wayne</i>	3	<i>Coordinated by SBE Chapter 74</i>			
	<i>Webster</i>	2	<i>Coordinated by SBE Chapter 87</i>			
	<i>Wheeler</i>	4	<i>Coordinated by SBE Chapter 87</i>			
York	York	1	KAWL	AM	1370	500wD,176wN
York	York	1	KTMX	FM	104.9	25kw@100m
	<i>York</i>	1	<i>Coordinated by SBE Chapter 74</i>			

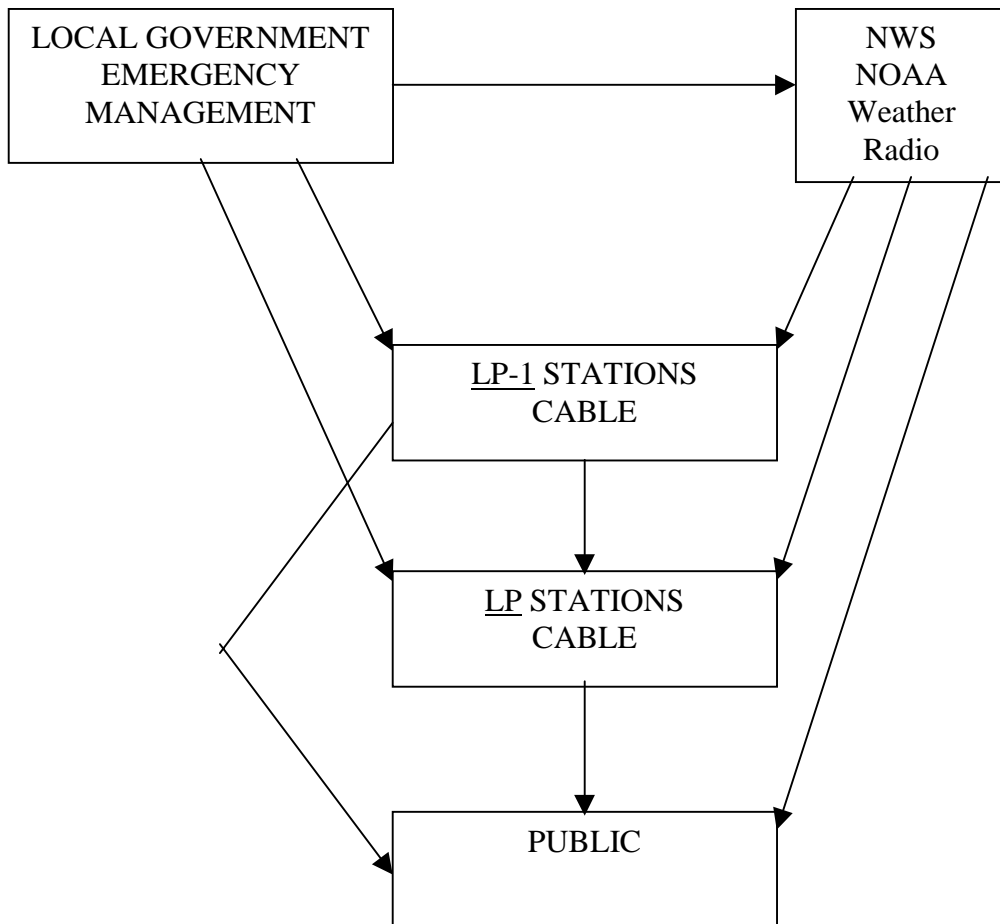
* Indicates Educational station

NEBRASKA EAS WEB



01/26/01

NEBRASKA LOCAL EAS



01/26/01

LOCAL EVENT CODES

Administrative Message	ADR Fire Text Message	FRX
Aircraft Emergency	AIR Flash Flood Watch	FFA
Blizzard Warning	BZW Flash Flood Warning	FFW
Chemical Plant Release	CHM Flash Flood Statement	FFS
Chemical Plant Test	CHT Flood Watch	FLA
Civil Disorder	CDS Flood Warning	FLW
Civil Emergency Warning	CEW Flood Statement	FLS
Civil Emergency Statement	CES Food Contamination	FOC
Civil Emergency Text Msg.	CEX Heat Stroke Warning	HSW
Civil Emergency Message	CEM High Wind Watch	HWA
Criminal/Terrorist Alert	CTA High Wind Warning	HWM
Earthquake Statement	EQS Hurricane Watch	HUA
Earthquake Text Message	EQX Hurricane Warning	HUW
Earthquake Warning	EQW Hurricane Statement	HLS
Earthquake Watch	EQA Ice Jam	ICI
Electric Power Outage	EPO Icy Roads	ICY
Emergency Action Notific.	EAN Industrial Plant Emergency	IPL
Emergency Action Term.	EAT Industrial Plant Warning	IPW
Environmental Warning	ENW Industrial Plant Statement	IPS
Environmental Statement	ENS Industrial Plant Test	IPT
Environmental Text Message	ENX Industrial Plant Text Msg.	IPX
Evacuation Warning	EVW Landslide Statement	LNS
Evacuation Statement	EVS Landslide Warning	LNW
Evacuation Text Message	EVX Landslide Watch	LNA
Evacuation Immediate	EVI Local Area Emergency	LAE
Fire Warning	FRW Local Area Priority Activa.	LAA
Fire Watch	FRA Local Area EAS Statement	LAS
Fire Statement	FRS Local Area Test	LAT
Local Area Text Message	LAX Railroad Toxic Leak	RRL
Military Priority Activat.	MLA Required Monthly Test	RMT
Military EAS Warning	MLW Required Weekly Test	RWT
Military EAS Statement	MLS Road Closure	ROC
Military Test	MLT School Closing	SOC
Military Text Message	MLX Severe Thunderstorm Watch	SVA
National Information Cent.	NIC Severe Thunderstorm Wrn	SVR
National Periodic Test	NPT Severe Weather Statement	SVS
Natural Gas Leak	NGL Sheriff Priority Activat.	SHA
Natural Gas Outage	NGO Sheriff EAS Statement	SHS
Nuclear Power Plant Emerg.	NPL Sheriff Test	SHT
Nuclear Power Plant Test	NPT Sheriff Text Message	SHX
Nuclear Plant Warning	NUW Shelter Facilities	SHL
Nuclear Plant Statement	NUS Ship Emergency	SHP
Nuclear Plant Test	NUT Special Weather Statement	SPS
Nuclear Plant Text Message	NUX State Emergency	STE
Oil Spill	OSP EAS Equipment Self Test	EST
Police Priority Activation	PLA State Priority Activation	STA
Police EAS Statement	PLS State EAS Statement	STS

Police Test	PLT State Test	STT
Police Text Message	PLX State Text Message	STX
Practice/Demo Warning	DMO Telephone Emergency	TEL
Prison Escape	PES Telephone Outage	TLO
Police Priority Activation	PLA 911 Telephone Outage	TEO
Police EAS Statement	PLS Tornado Warning	TOR
Police Test	PLT Tornado Watch	TOA
Police Text Message	PLX Toxic Leak	TXL
Radiological Emergency	RAD Traffic Emergency	TRF
Railroad Emergency	RRE Traffic Emergency	TRE
Tsunami Watch	TA Traffic Text Message	TRX
Tsunami Warning	TSW Water Contamination	WAC
Traffic Announcement	TRA Water Outage	WAO
Traffic Authority Test	TRT Winter Storm Watch	WSA
	Winter Storm Warning	WSW

This Document is prepared by the
Nebraska State Emergency Communications Committee
Vern Killion Chair
Revised March 2001

Note to stations:

Please send any corrections or updates for your particular data listing to:
vkillion@krvn.com and Bob.Eastwood@nema.state.ne.us
for inclusion in the next plan update.

Copies are sent electronically or in print form to:
Federal Communications Commission,
Nebraska Educational Telecommunications
Radio and TV Stations throughout Nebraska
and other Emergency agencies

This document is available on the
Society of Broadcast Engineers Chapter 74 website
<http://www.radiostation.com/sbe74/>